

RefectoCil

Intense Brow[n]s

RefectoCil Intense Brow[n]s Base Gel – Chocolate Brown

Eyelash & eyebrow tint, 15 ml.



For natural brunette results – Chocolate Brown

A medium brown shade with a slight warm undertone. Recommended for neutral or warm skin types.

The Intense Brow[n]s Base Gel is the first step in the tinting system to create impactful eyebrows and expressive eyelashes. For fuller looking eyebrows and expressive eyelashes. Available in 4 fascinating shades.

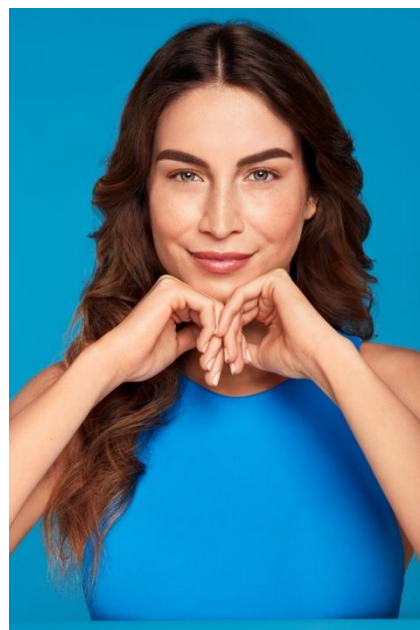
- Lasts for up to 6 weeks
- Dermatologically & ophthalmologically tested
- Semi-permanent make-up effect for fuller looking brows
- Not tested on animals

Application:

- Lash Tinting: Attach RefectoCil Silicone Pads or RefectoCil Eye Protection papers with RefectoCil Skin Protection Cream & Eye Mask
- Optionally apply RefectoCil Intense Brow[n]s Intensifying Primer in Strong or Medium only to the eyebrows– leave on for 4 minutes and remove with dry Q-tip
- Apply Intense Brow[n]s Base Gel – leave on for 2 minutes and remove with dry Q-tip
- Apply Intense Brow[n]s Activator Gel – leave on for 1 minute and remove with moist cotton ball - done!

Additional information:

- Please use in combination with RefectoCil Intense Brow[n]s Activator Gel only!
- Please don't mix Intensifying Primer, Base Gel and Activator Gel!



RefectoCil

Intense Brow[n]s


Ingredients:

Aqua, Alcohol denat., Safflower Flower/(Achillea Millefolium/Calendula Officinalis Flower/Leaf/Stem)/(Vaccinium Myrtillus/Vitex Agnus-Castus Fruit)/Rhus Chinensis Gall/(Camellia Sinensis/Nettle Leaf)/Dichroa Febrifuga Root/Grape Seed/(Juniperus Communis Stem/Leaf)/Acacia Catechu Wood/Goldenrod/Hypericum Perforatum Extract, Carbomer, Sodium Hydroxide

Logistic data:

Item number	Sales unit EAN & measurements	Order unit EAN & measurements	Transport unit	Customs tariff number
05037	9 003877 906414 Measurements (cm): 10,5l x 2,4w x 2,4h Content: 15ml Single weight: 0,023 kg	9 003877 906421 (12 pcs.box) Measurements (cm): 15l x11w x 5h (12 pcs.box) Content: 12 tubes (12 pcs.box) Weight: 0,28 kg	Measurements (cm): 45,0l x 31,5w x 20,7h Content: 384 tubes Weight: 9,5 kg	33079000

Product information:

Product description:	Formula code: FA5531-02 For fuller looking eyebrows and expressive eyelashes. Filled in 15 ml aluminium tubes. The product has to be used only in combination with the component RefectoCil Activator Gel and optionally with RefectoCil Intensifying Primer.
Specifications:	Density: 0,980 1,200 g/cm ³ pH value: 5,20 ... 6,20 Viscosity: 60.000 ... 90.000 mPas Appearance: yellowish transparent gel Odour: characteristic
Stability data: Where to be found:	Marked with  6M Minimum durability after first opening: 6 months Tube & on folded box
Batch code:	Tube fold and imprint of folding box.
Certifications:	Grüner Punkt, Vegan Society
Storage conditions:	Store in a dry place, not above room temperature and not next to heat sources (f. e. radiators). Close tube immediately after use.
Particular precautions according to EU Cosmetics Regulation:	None.
Additional information	We recommend an allergy test (patch test) before the first tinting and after longer tinting breaks as a precautionary measure. Instructions: Apply 1 cm of RefectoCil Intensifying Primer and 1 cm of RefectoCil Base Gel next to each other to a small area on the inner bend of the elbow or behind the ear. Allow to dry and leave uncovered for 48 hours, then clean thoroughly. If any irritation occurs during this time do not carry out the treatment.
Disclaimer	For cosmetic products no Safety Data Sheets (MSDS) are required by European (EC) law. This document is not a Safety Data Sheet (MSDS) in the sense of European (EC) chemicals legislation. It is given voluntarily and only for information of customers. We will take no liability for any consequences of improper use or misuse of our products.

RefectoCil

Intense Brow[n]s

General Information

1. Identification of the product

Mixture of natural plant extracts on a gel basis for use in combination with silver nitrate containing developer components. Contrary to oxidative dyeing systems, components must not be mixed but applied one after the other.

2. Hazards identification

When used properly, the product is safe and tolerable in accordance with the legal provisions (Article 3 of the EU Cosmetics Regulation). The following information applies to inadvertent misuse or accidents as well as possible commercial uses.

No health hazards are known; nevertheless an allergy test is recommended as a precautionary measure.

3. First aid measures

Measures in the event of

- Contact with eyes: rinse thoroughly with plenty of lukewarm water immediately (remove contact lenses); then consult a doctor (ophthalmologist) without delay.
- Ingestion of larger amounts: do not induce vomiting. Rinse out mouth and drink about one to two glasses of water. Where appropriate, consult competent Poison Control Centre or doctor.
- Contact with skin: immediately wash off with water and soap; skincare. If skin irritation occurs, consult doctor.

When consulting a doctor or a Poison Control Centre always have packaging or label and possibly package insert available.

4. Fire fighting measures

All common extinguishing agents are suitable.

5. Accidental release measures; disposal considerations

In the event of spillage/leakage: mop up main volume with cloths; when larger amounts are involved, dispose of cloths or mopping up material by controlled disposal. Remove rest with water and common cleaning agent. Wear suitable protective gloves (see 6.)

Packaging should be recycled after residual emptying. Filled, unused packages must be disposed of separately in accordance with the waste management directives of the municipality.

6. Handling and storage

Must be used in accordance with manufacturer's instructions, wear gloves (single-use gloves in accordance with DIN EN 374 of PVC or nitrile). Avoid contact with textiles. Observe any warnings on packaging.

Avoid contact with eyes or facial skin.

Close container after use. Store in a cool and dry place (not above room temperature).

7. Other information

Refer to conditions of use and any warnings on the product or packaging.

For consultation in the event of poisoning, the Poison Control Centres have additional details about the individual products. When consulting a Poison Control Centre always keep packaging or label and possibly package insert available.